

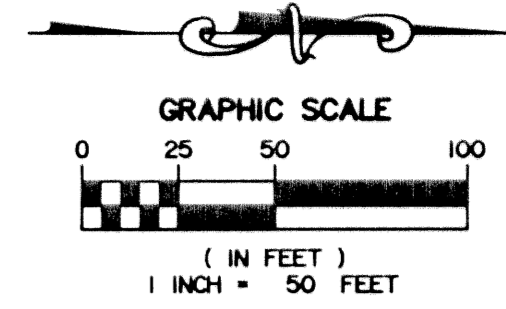
THIS INSTRUMENT WAS PREPARED BY:
WILLIAM D. O'CONNOR, P.S.M.

MILLER LEGG
1300 Corporate Center Way
Suite 201
Wellington
Florida 33414-8593

ASSOCIATES, INC.
Engineers - Planners
Land Surveyors (561)798-9981
Environmental Professionals Fax: (561)795-9408
CERTIFICATE OF AUTHORIZATION L.B. 6680

"PUBLIX AT MILITARY CROSSING"

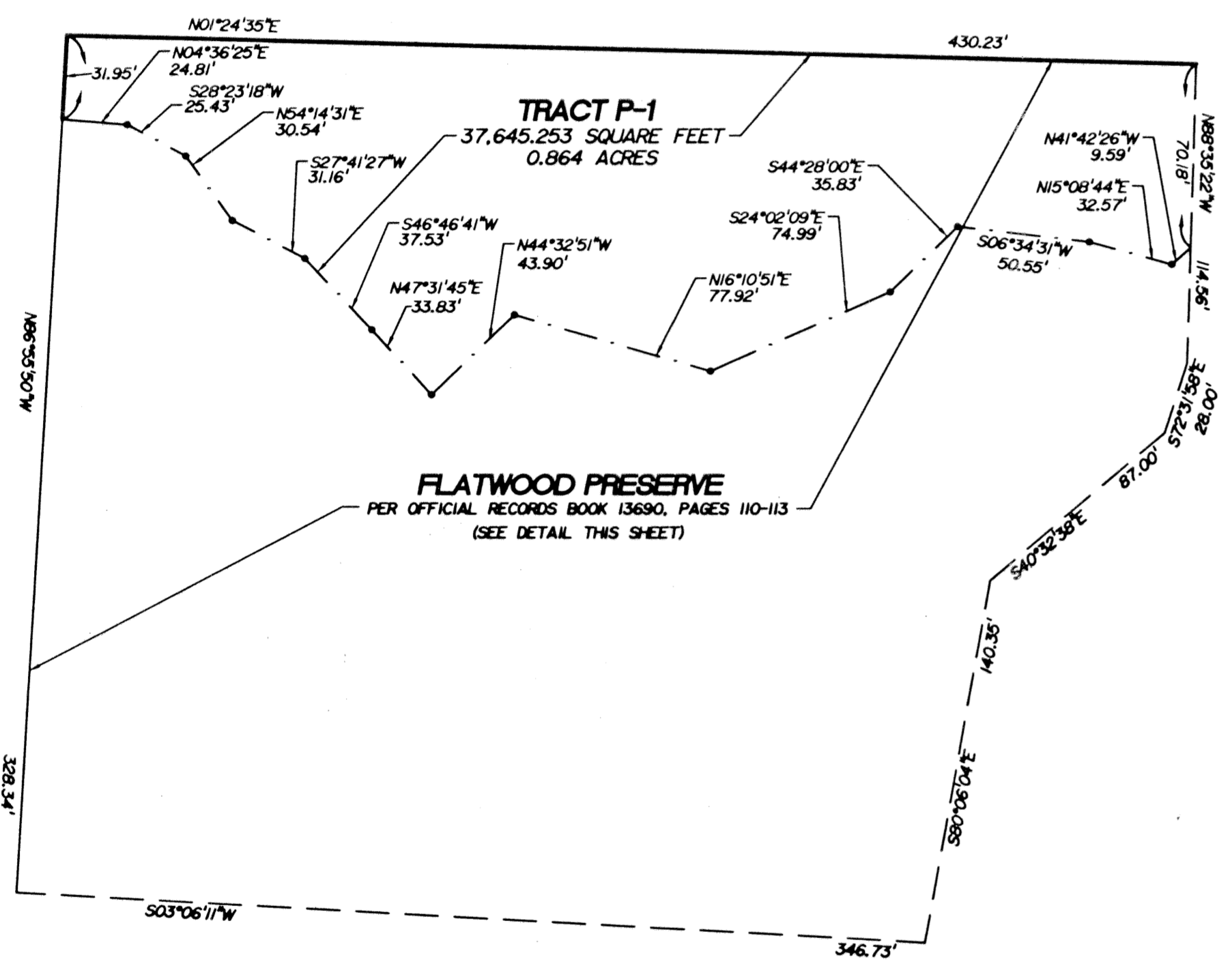
A PARCEL OF LAND LYING IN SECTION 25, TOWNSHIP 44 SOUTH, RANGE 42 EAST,
CITY OF GREENACRES, PALM BEACH COUNTY, FLORIDA.
NOVEMBER 2002



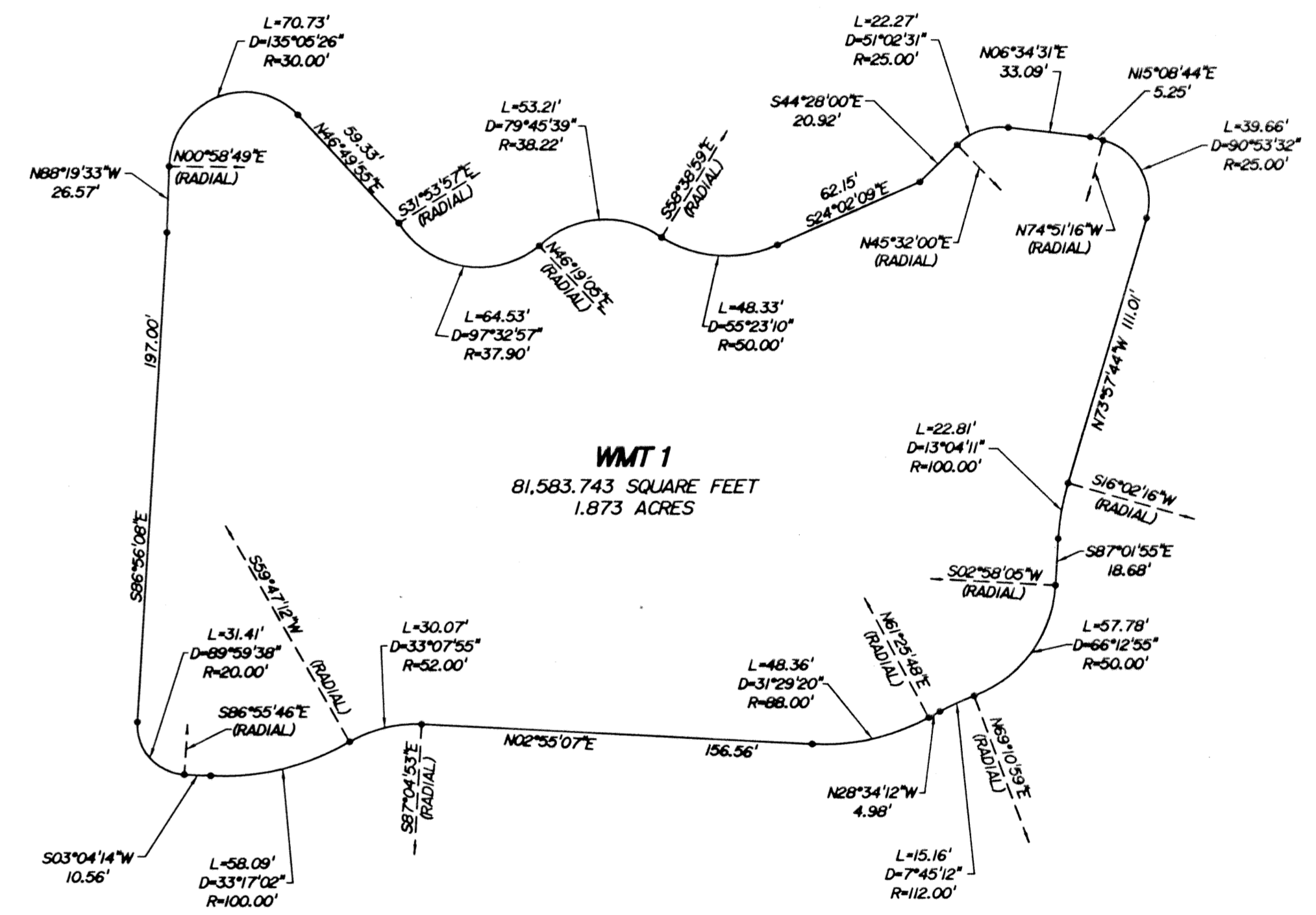
STATE OF FLORIDA
COUNTY OF PALM BEACH
This plat was filed for record
at _____ this _____
day of _____, 2002,
and duly recorded in Plat Book
_____ Pages _____, Through
_____.

DOROTHY H. WILKEN
Clerk of Circuit Court
By: _____

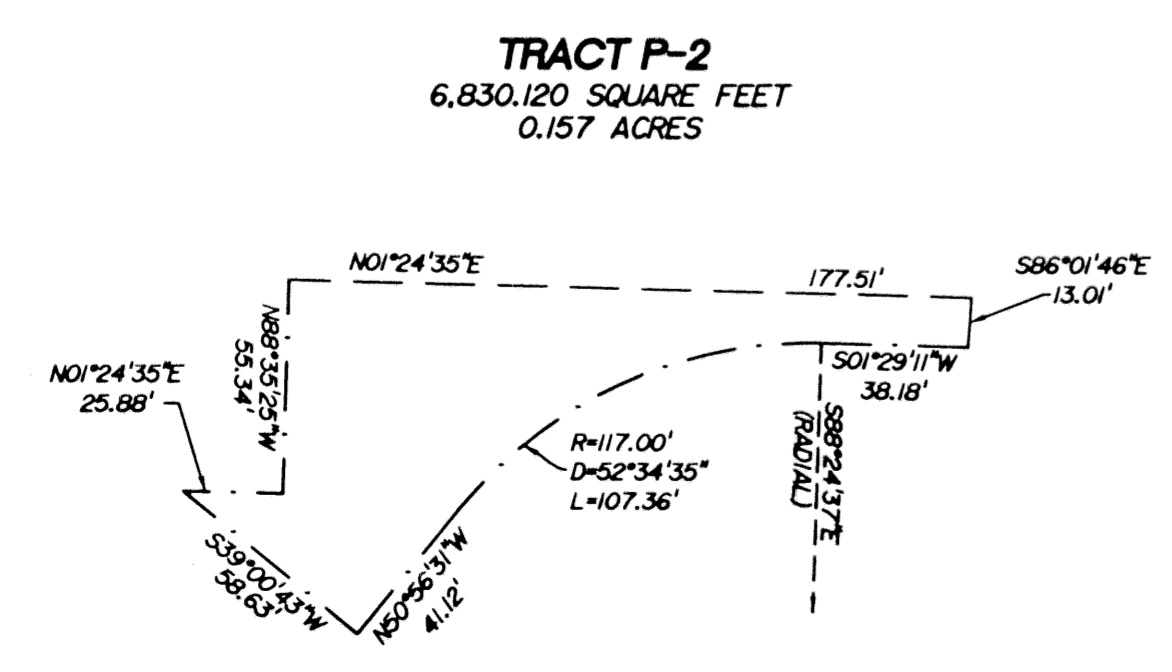
DETAIL 'A'



DETAIL 'B'



DETAIL 'C'



DETAIL 'D'

